

GPRC6A Polyclonal Antibody
Catalog # AP70223**Specification****GPRC6A Polyclonal Antibody - Product Information**

Application	WB, IF
Primary Accession	Q5T6X5
Reactivity	Human
Host	Rabbit
Clonality	Polyclonal

GPRC6A Polyclonal Antibody - Additional Information**Gene ID** 222545**Other Names**

GPRC6A; G-protein coupled receptor family C group 6 member A; hGPRC6A; G-protein coupled receptor GPCR33; hGPCR33

Dilution

WB~~Western Blot: 1/500 - 1/2000. Immunofluorescence: 1/200 - 1/1000. ELISA: 1/5000. Not yet tested in other applications.

IF~~1:50~200

Format

Liquid in PBS containing 50% glycerol, 0.5% BSA and 0.09% (W/V) sodium azide.

Storage Conditions

-20°C

GPRC6A Polyclonal Antibody - Protein Information**Name** GPRC6A**Function**

Receptor activated by multiple ligands, including osteocalcin (BGLAP), basic amino acids, and various cations (PubMed:<<http://www.uniprot.org/citations/15576628>>15576628). Activated by amino acids with a preference for basic amino acids such as L-Lys, L-Arg and L-ornithine but also by small and polar amino acids (PubMed:<<http://www.uniprot.org/citations/15576628>>15576628). The L-alpha amino acids respond is augmented by divalent cations Ca(2+) and Mg(2+) (By similarity). Seems to act through a G(q)/G(11) and G(i)-coupled pathway (By similarity). Regulates testosterone production by acting as a ligand for uncarboxylated osteocalcin hormone: osteocalcin-binding at the surface of Leydig cells initiates a signaling response that promotes the expression of enzymes required for testosterone synthesis in a CREB- dependent manner (By similarity). Mediates the non-genomic effects of androgens in multiple tissue (By similarity). May coordinate nutritional and hormonal anabolic signals through the sensing of extracellular amino acids, osteocalcin, divalent ions and its responsiveness to anabolic steroids (PubMed:20947496).

Cellular Location

Cell membrane {ECO:0000250|UniProtKB:Q8K4Z6}; Multi-pass membrane protein {ECO:0000250|UniProtKB:Q8K4Z6}

Tissue Location

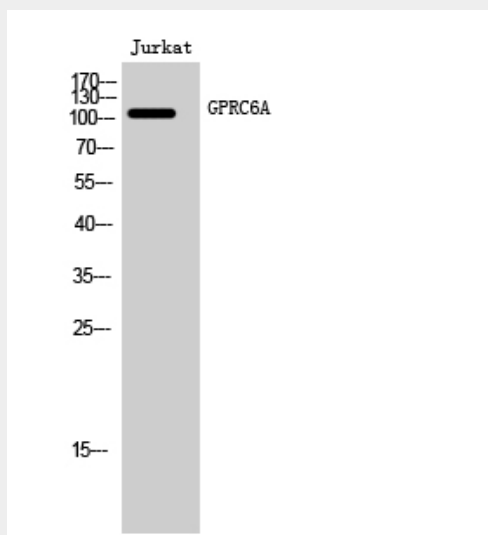
Isoform 1 is expressed at high level in brain, skeletal muscle, testis, bone, calvaria, osteoblasts and leukocytes Expressed at intermediate level in liver, heart, kidney and spleen Expressed at low level in lung, pancreas, placenta and ovary. Not detected in thymus, prostate, small intestine, tongue and colon Isoform 1 and isoform 2 are expressed in kidney at the same level Isoform 2 is expressed at lower level than isoform 1 in the other tissues.

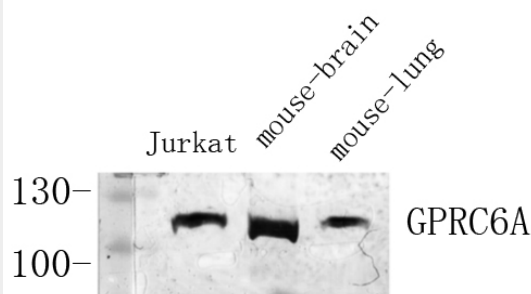
GPRC6A Polyclonal Antibody - Protocols

Provided below are standard protocols that you may find useful for product applications.

- [Western Blot](#)
- [Blocking Peptides](#)
- [Dot Blot](#)
- [Immunohistochemistry](#)
- [Immunofluorescence](#)
- [Immunoprecipitation](#)
- [Flow Cytometry](#)
- [Cell Culture](#)

GPRC6A Polyclonal Antibody - Images





GPRC6A Polyclonal Antibody - Background

Receptor activated by amino acids with a preference for basic amino acids such as L-Lys, L-Arg and L-ornithine but also by small and polar amino acids. The L-alpha amino acids response is augmented by divalent cations $\text{Ca}(2+)$ and $\text{Mg}(2+)$. Activated by extracellular calcium and osteocalcin. Seems to act through a $\text{G}(q)/\text{G}(11)$ and $\text{G}(i)$ -coupled pathway. Mediates the non-genomic effects of androgens in multiple tissue. May coordinate nutritional and hormonal anabolic signals through the sensing of extracellular amino acids, osteocalcin, divalent ions and its responsiveness to anabolic steroids.